



Narviflex[®]
■ BELTING

**Premium Scrapers for
Applications in the Food
Sector or Applications
requiring limited
installation space**

A close-up photograph of a Narviflex EU scraper assembly. It features a large, polished metal roller mounted on a blue structural frame. A metal scraper blade is visible, attached to the roller. The background is a plain, light-colored wall.

**Narviflex EU
Scrapers**

Unique variety of options

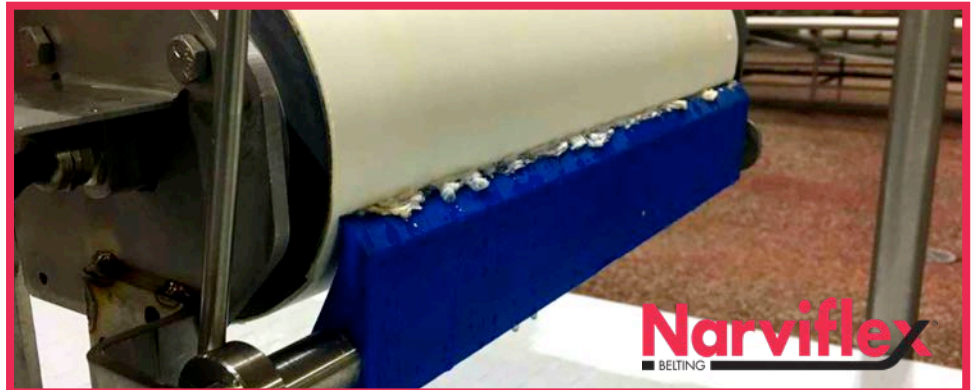
Hygiene and efficiency are factors that ensure the smooth functioning of production processes over the long term. Nevertheless, technically unsuitable and hygienically dubious scrapers are still being used.

When scrapers are initially installed, product particularities and characteristics are frequently not known or present themselves differently in the course of production than originally expected.

A request from the food processing industry, accompanied by detailed specifications, formed the foundation for the development of our innovative scrapers.

Properties

A specially developed polyurethane body, cast around a stainless steel supporting tube or shaft, fits closely against the conveyor or roll surface and responds to product flow with great flexibility.



Applications

- Pizza production
- Chocolate and candy industry
- Meat processing industry
- Industrial bakeries
- Paper recycling
- Cement industry
- Waste water treatment
- Brick production
- Sugar refinery

and many more

Benefits

- + optimized production processes with reduced material waste
- + product safety: our scrapers meet the highest hygienic standards (according to EC regulations and REACH-standard)
- + usable even in case of problematic substances such as oil, grease, cleaning agents and solvents
- + suitable for a wide temperature range (-20 °C to +60°C; app. - 4° F to 140° F)
- + high flexibility and adaptability
- + the scrapers are very gentle on conveyors, even under challenging conditions such as dry running
- + various designs, installation heights and overall widths
- + fast, simple care and maintenance
- + the simple design allows a quick and straightforward installation
- + service: we offer consultation and installation on site.

Narviflex NV (Belgium)
Liesdonk 7
B-2440 Geel Belgium
Tel : +32 14 59.11.31
Fax : +32 14 59.10.76
E-Mail : info@narviflex.be

We have Technical Specialists and Service/Installation Teams in each local Branch :

- Geel (B)
- Gent (B)
- Grâce-Hollogne (B)
- Sint-Pieters-Leeuw (B)

Narviflex BV (The Netherlands)

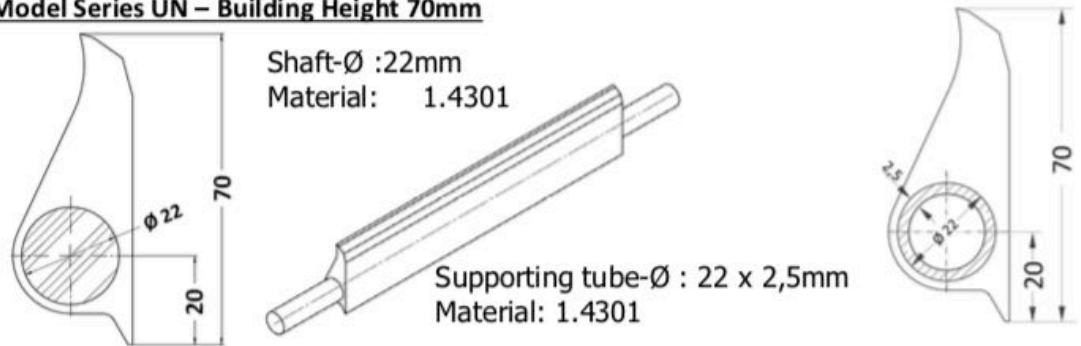
Care4Belts BV
Spikweien 45
NL-5943 AC Lomm/Venlo
Tel : +31 77 33.33.600
Fax : +31 77 33.33.609
E-Mail : info@narviflex.nl

Care4Belts Noord BV
De Steven 13
NL-9206 AX Drachten
Tel : +31 512 745.187
Fax : +32 14 59.10.76
E-Mail : drachten@narviflex.nl

Narviflex EU Scraper - Un (Universal)

Building Heights 70 & 100 mm

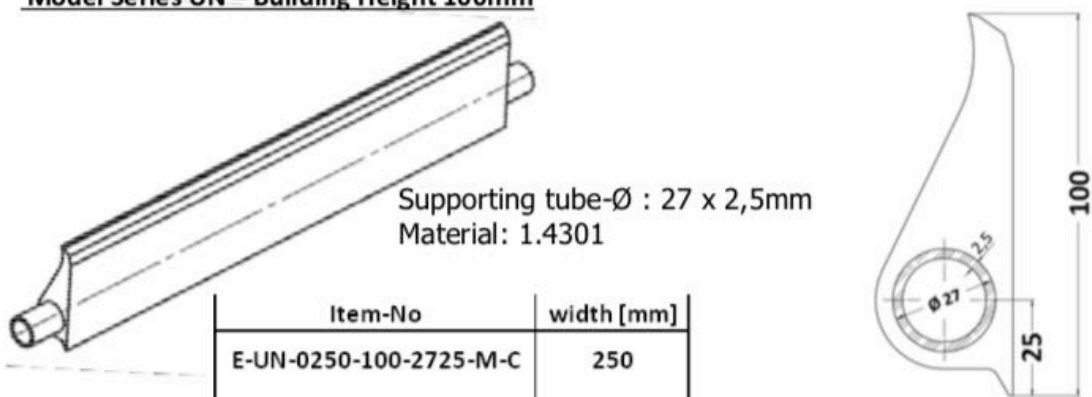
Model Series UN – Building Height 70mm



Intermediate widths available!

Item-No	width [mm]	Item-No	width [mm]
E-UN-0250-070-2200-M-C	250	E-UN-0250-070-2225-M-C	250
E-UN-0300-070-2200-M-C	300	E-UN-0300-070-2225-M-C	300
E-UN-0350-070-2200-M-C	350	E-UN-0350-070-2225-M-C	350
↓		↓	
E-UN-1050-070-2200-M-C	1050	E-UN-1050-070-2225-M-C	1050
E-UN-1100-070-2200-M-C	1100	E-UN-1100-070-2225-M-C	1100

Model Series UN – Building Height 100mm



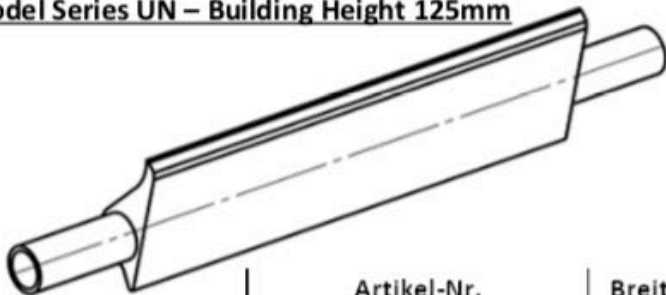
Item-No	width [mm]
E-UN-0250-100-2725-M-C	250
E-UN-0300-100-2725-M-C	300
E-UN-0350-100-2725-M-C	350
↓	
E-UN-1450-100-2725-M-C	1450
E-UN-1500-100-2725-M-C	1500

Intermediate widths available!

Narviflex EU Scraper - Un (Universal)

Building Height 125 mm

Model Series UN – Building Height 125mm

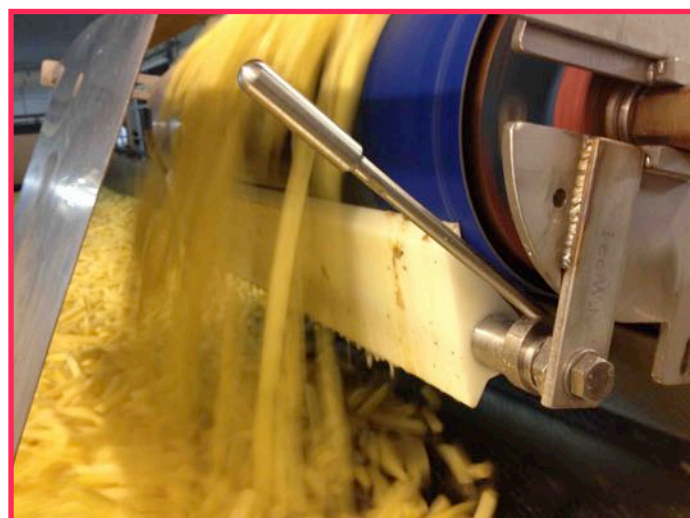
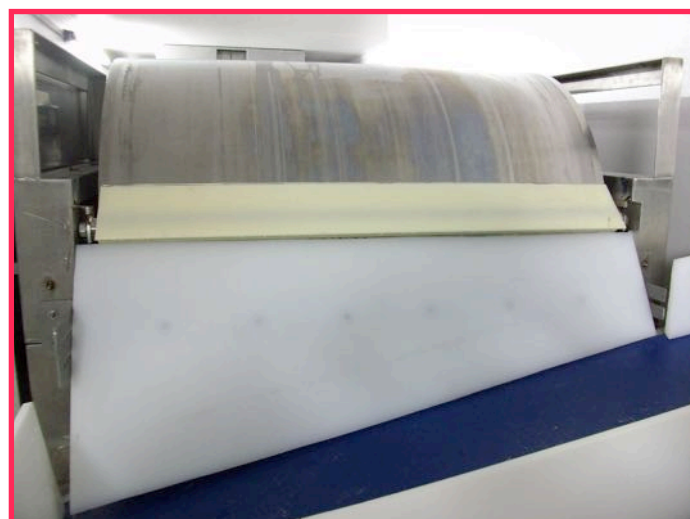
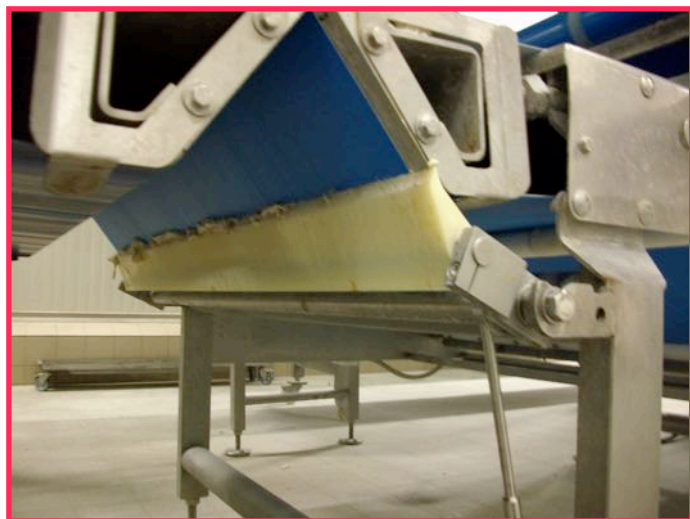


Artikel-Nr.	Breite [mm]
D-UN-0300-125-3525-M-F	300
D-UN-0350-125-3525-M-F	350
D-UN-0400-125-3525-M-F	400
D-UN-1450-125-3525-M-F	1450
D-UN-1500-125-3525-M-F	1500

Intermediate widths available!

Narviflex EU Scraper

Photo Page - PVC and PU Belting



Narviflex EU Scraper

Photo Page - Rubber Belting

